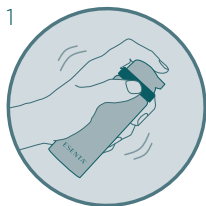


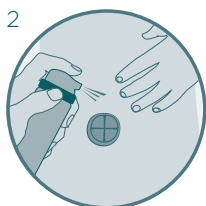
## ESENTA™ STING FREE SKIN BARRIER SPRAY

EASY TO USE: FOLLOW THE BELOW STEPS



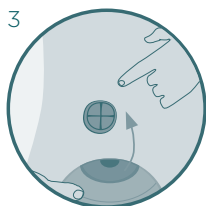
### GETTING STARTED

Shake well before use. Clean and dry the skin.



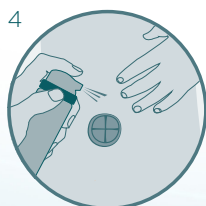
### EASY TO APPLY

Hold approximately 10 cm or 4 inches from the area to be treated and apply a uniform coating in a sweeping motion.



### CHECK IF THE SKIN IS DRY

Ensure the area is completely dry before applying adhesive products such as stoma appliances or dressings.



### REAPPLY

ESENTA™ Skin Barrier should be replaced at every dressing or appliance change to maintain complete protection. ESENTA™ Skin Barrier will not cause a build up of film on the skin surface.



For more information please call  
UK **0800 282 254**  
ROI **1800 721 721**

See package insert for complete instructions for use.

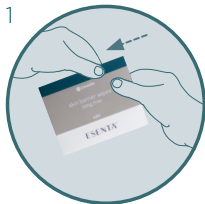
©2022 ConvaTec Inc. ®/™ All trademarks are property of their respective owners.  
AP-Q32858-MRL-GBL OST423v2



Printed on FSC mix recycled paper. FSC forests are managed with consideration for people, wildlife and the environment.

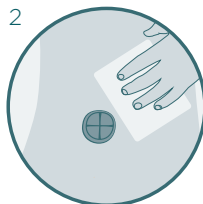
## ESENTA™ STING FREE SKIN BARRIER WIPES

EASY TO USE: FOLLOW THE BELOW STEPS



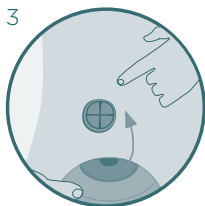
### GETTING STARTED

Clean and dry the skin. Tear sachet to open and unfold wipe.



### EASY TO APPLY

Gently wipe the area to be protected and wait until dry.



### CHECK IF THE SKIN IS DRY

Ensure the area is completely dry before applying adhesive products such as stoma appliances or dressings.



### REAPPLY

ESENTA™ Skin Barrier should be replaced at every dressing or appliance change to maintain complete protection. Reapplication is recommended every 12-72 hours, dependent upon skin surface conditions. ESENTA™ Skin Barrier will not cause a build-up of barrier film on the skin surface.

For more information please call  
UK **0800 282 254**  
ROI **1800 721 721**

See package insert for complete instructions for use.

©2022 ConvaTec Inc. ®/™ All trademarks are property of their respective owners.  
AP-032858-MRL-GBL OST423v2



Printed on FSC mix recycled paper. FSC forests are managed with consideration for people, wildlife and the environment.

